

A Brief Guide to Your Code of Behaviour



In Coláiste Mhichíl

Respect

- ✓ **Respect** yourself.
- ✓ **Respect** all students, staff and visitors.
- ✓ **Respect** your property.
- ✓ **Respect** the property of others and the school.
- ✓ **Respect** the privacy of others by not using camera phones /cameras in school.

Health & Safety

- ✓ Ensure your actions do not put **you at risk**.
- ✓ Ensure your actions do not put **others at risk**.
- ✓ Explain your **absences** from school with notes and follow the correct procedures.

Uniform

- ✓ Wear your full uniform **properly** and with **pride**.
- ✓ While in uniform behave in a manner that brings credit to you and your school.

Punctuality & Class

- ✓ Be **on time** for school/class.
- ✓ Be **fully prepared** for all classes (book, pens, homework P.E. gear etc.).
- ✓ Do your **very best** at all times

Personal Development

- ✓ If you make mistakes/get into trouble accept any consequences willingly.
- ✓ Learn from your mistakes.
- ✓ Be proud of your achievements.

Promoting Positive Behaviour

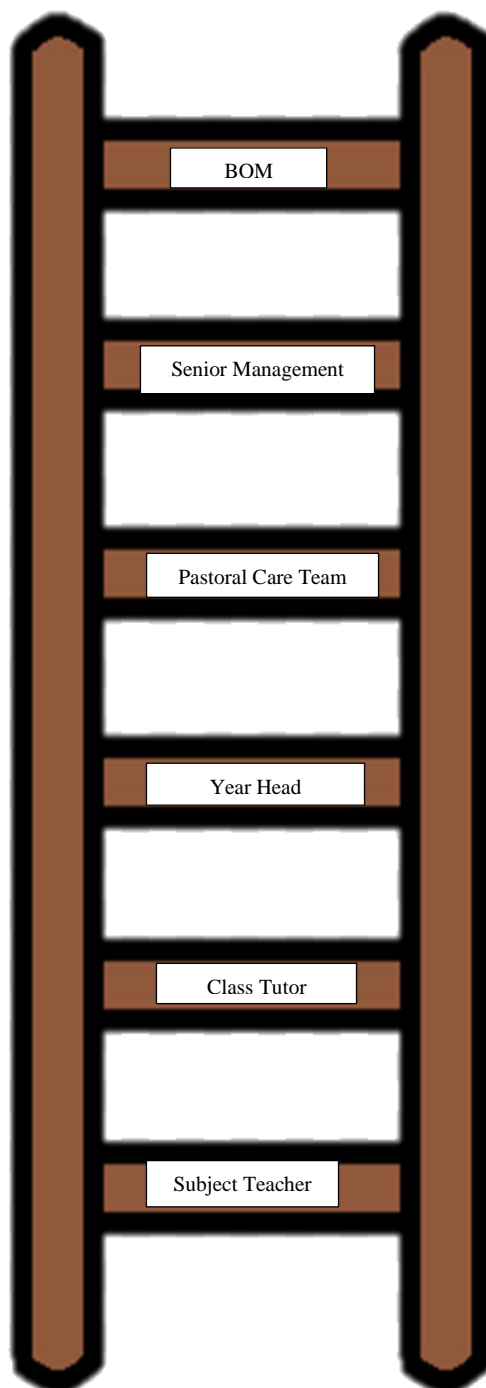


In Coláiste Mhichíl we not only promote and teach positive behaviour and attitudes, we also greatly value and reward them. All members of staff recognise and celebrate positive behaviour at all times throughout the school.

WE, THE STAFF OF COLÁISTE Mhichíl, REWARD POSITIVE BEHAVIOUR IN THE FOLLOWING WAYS

INFORMAL	FORMAL
<ul style="list-style-type: none">• Verbal Praise to student.• Positive comment about student or class to class tutor, year head, senior management.• Positive phone call home on student progress from member of staff.• Positive feedback on student progress to parents at school gate.• Display student work in class and school environment.• Highlight student achievements on school social media.• Positive feedback at parent Teacher Meetings.	<ul style="list-style-type: none">• Recording a positive note in the student's School Journal• Year Head acknowledges a student or class at year group assembly.• Positive Behaviour Awards on a weekly basis for all year groups.• Attendance Awards on a weekly basis for all year groups.• Recipients of Positive Behaviour Awards and Attendance Awards acknowledged over school intercom and on school social media.• Annual Student Awards for all year groups.• TY Student of the Month

Ladder of Referral - Coláiste Mhichíl



Supports in Place for Students in Coláiste Mhichíl



- Subject Teacher
- Class Tutor
- Year Head
- Student Support Team
- Pastoral Care Teams
- Attendance Teams
- AEN Team
- Behaviour for Learning Program
- Career Guidance Counsellor
- Home School Community Liaison Coordinator
- School Completion Officer
- SNAs

As a school community we liaise with a number of external support agencies including but not limited to ; EWS, NEPS, CAMHS, NCSE, NBSS, Jigsaw, Bluebox



Code of Behaviour 2022/23

Coláiste Mhichíl, Sexton Street

Limerick

Coláiste Mhichíl is an all boys voluntary secondary school under the Trusteeship of the ERST. Coláiste Mhichíl aims to provide a visibly Christian environment where pupils and staff can achieve their full potential as human beings intellectually, physically, socially and in a spiritual fashion in the tradition of Blessed Edmund Rice.

Promoting positive behaviour and good discipline in the Catholic School is part of the moral guidance of students.

Ethos & Expectations

ERST Charter

The core values of ERST are intended to support and nourish the lives of the people at the heart of our school: students, staff and parents. The key elements are

- Nurturing Faith, Christian Spirituality and Gospel-based Values
- Promoting Partnership in the School Community
- Excelling in Teaching and Learning
- Creating a Caring School Community
- Inspiring Transformational Leadership

Students of Coláiste Mhichíl are expected, at all times, to respect and adhere to Christian values. Students are expected to;

- Act justly
- Be honest and truthful
- Show a respectful attitude to their fellows students, the entire staff of the school and any visitors to the school
- Be courteous and concerned for the good of others
- Observe good manners at all times
- Show respect for their environment
- Co-operate actively in the work of Coláiste Mhichíl.

Purpose of Discipline

- 1) To instil a sense of self worth and self-respect.
- 2) To provide a classroom environment conducive to learning.
- 3) To develop socially acceptable behaviour by showing common courtesy and respect for the feelings of others. Respect for our fellow students and staff members means not engaging in any hurtful or bullying behaviour. Bullying is the unwelcome treatment of one person towards another. Cases of bullying will be inspected through the schools anti bullying policy.
- 4) Every pupil has the right to the best education and therefore has the right to the best conditions that make this possible.
- 5) Consistent and effective promotion of positive behaviour, develop a good teacher-pupil relationship and encourage co-operation between home and school.
- 6) A policy promoting good behaviour and effective pastoral care will be adhered to in an effort to minimise the need for corrective discipline/sanctions.
- 7) To provide an atmosphere where the school can provide a wide range of co-curricular and extra-curricular activities. The aim is to provide a rich variety of experiences to promote the holistic development of each student.

Discipline Procedures

Students of Coláiste Mhichíl are expected to comply with the school's Code of Behaviour. Parents/Guardians of students are required to read the Code of Behaviour and indicate on the attached form that they and the student, have read, understood and agree with the content. Failure to follow the code outlined will result in the school taking action according to the discipline procedures and sanctions outlined in the Code of Behaviour.

The management and teachers of the Coláiste Mhichíl will seek to ensure, as far as possible, that the organisation, curriculum, teaching methods and general atmosphere of the school are such that disciplinary problems do not arise and the application of sanctions is called for as rarely as possible.

However, where a student acts in a manner prejudicial to the learning environment, good order or the interest of others, the school has a right and duty to intervene where necessary and impose sanctions. The sanctions to be employed will depend on the nature and seriousness of the misdemeanour and care should be taken to avoid group punishments where possible.

In the interest of fairness each incident will be assessed individually in line with the sanctions outlined in this code. Occasionally however, it may be necessary to take further and/or additional measures as well as those outlined in this Code.

In all cases a written record will be kept of the misdemeanour and students will be afforded the opportunity to explain their behaviour and state their case.

Sanctions which may be used include:

- 1) **Reasoning with the student**
- 2) **Verbal reprimand** (*including advice on how to improve*)
- 3) **Temporary separation from peers, friends etc.**
- 4) **Detained to complete work/additional exercises during part of lunch break** (*max 20mins*)
- 5) **Seek a verbal or written apology**
- 6) **Given appropriate & reasonable punishment** (*e.g. Prescribing additional work/removing graffiti, cost of damage*)
- 7) **Communication with parents** by way of school journal, phone call, email or formal letter. (*Parental involvement will be sought sooner rather than later.*)
- 8) **Lunchtime detention** Teachers will inform parents of lunchtime detentions through the Student Journal or a phone call home. (*max 20 minutes*)
- 9) **Referral to Year Head.** A written report will be given to the Year Head.
- 10) **Loss of privileges** - this may include shortened break times, withdrawal from trips/activities and/or other loss of privileges (*Year Head, Dep.Principal, Principal*)
- 11) **After-school detention** - (*Teacher, Year Head, Dep.Principal, Principal*)
In cases of persistent misconduct or serious incidents a Teacher/Year Head/Senior Management may keep a student for after school detention. Parents will be informed of the sanction by phone and will be asked to ensure that the student has a suitable means of travelling home after detention.
- 12) **Referral to Pastoral Care Team**
- 13) **Referral to Student Support Team**
- 14) **Debarment from class** (*Principal*)
- 15) **Suspension from school** (*Principal/BOM*)
- 16) **Exclusion** (*via Board of Management*). Exclusion will only be considered after every possible effort to improve behaviour has failed & other sanctions in this code have been exhausted or if the seriousness of the offence justifies consideration of immediate exclusion.

PUNCTUALITY & ATTENDANCE

1) Students are required to be on time for school/classes.

2) **Arriving Late**

Latecomers must;

- **Have a note from parents/guardians explaining why they are late.**
- **Report to the School Office to sign Late book.**

Persistent latecomers may be required to do detention and/or may be referred to the Year Head.

3) **Leaving School Early**

Students who need to leave school early must:

- Have a note from parents/guardians.
- Have this note signed by the Year Head / Deputy Principal/Principal in the morning **before school**
- Show this note to the secretary before **8.50 am** to enable contact home to verify note

All students must be collected from the School Office where the parent/guardian must sign the student out in the Sign Out Book.

4) Students who need to leave class during class-time must receive written permission from their teacher (*in Student Journal*).

Full details of the procedures and protocols around attendance are outlined in the school's Attendance Policy

N.B. Explanatory notes, written, dated and signed by a Parent/Guardian are required to;

- Explain a students **absence** from school on the day of his/her return
- Obtain **permission to leave** school during the day
- Explain **late** arrival in school

Students who do not bring a note explaining their absence(s) may serve a period of detention.

**TRUANCY FROM CLASS/PART OF A DAY IS AN EXTREMELY SERIOUS OFFENCE
& MAY INCUR SUSPENSION.**

Under the Education Welfare Act (2001) all school have a legal obligation to notify the Educational Welfare Officer of frequent absenteeism.

UNIFORM

The wearing of our school uniform promotes respect for self and one's peers. While in uniform our students represent our school community, we expect our students to be aware of the proud educational values of our school. This awareness should be reflected in the respect shown to the uniform.

The following uniform is **obligatory** and is to be worn each school day unless specifically permitted not to do so

Junior Cycle Students

Grey jumper with school crest

Blue shirt

Maroon and white tie

Navy trousers

Plain black shoes



Senior Cycle students

Navy jumper with school crest

Blue shirt

Maroon and white tie

Navy trousers

Plain black shoes



Half zip also permitted



-
- 1) Official School uniform must be clean, neat and tidy and correctly worn at all times.
 - 2) **Tracksuits and hoodies are not allowed under any circumstances.**
 - 3) Piercings - Students may wear a small, single stud earring in each ear (*long or dangly earrings are not to be worn*).
Students are not permitted to wear/display any other visible piercing/jewellery or tattooing. Facial/Bodily piercings, though not encouraged, must be covered with a plaster. All piercings must be removed prior to PE class as per PE policy.
 - 4) Students must remove outdoor jackets when in the school building.
-

Students who are not in full school uniform for any reason must;

- Report to their Year Head before school.
- Have an **explanatory note** from parents which is signed by Year Head before going to class.
- The student must show to the teacher at the beginning of each class.

Persistent breaches of the uniform code may incur further sanctions including debarment from class until the Year Head meets with the student's parent(s)/guardian.

Students who cannot wear school uniform for extended periods due to medical reasons will be required to submit a medical certificate to this effect.

Once a student is present in school, they are required to bring in their PE gear, change and partake in either a non-physical or leadership role in their PE lesson.

SCHOOL PROPERTY

All students are expected to work towards maintaining a caring and co-operative spirit in the school. Any deliberate damage to school property or that of any member of the school community will require restitution.

- 1) Students are expected to help maintain cleanliness in their classrooms and the school environment.
- 2) Any form of **eating/drinking** during class is **prohibited**.

Students may only eat in the school yard, during break and lunch. Soft drinks/energy drinks are not permitted in school.

- 3) **Vandalism, graffiti, theft or damage** to **school property** are serious offences and will incur the following;
 - Parents will be contacted
 - Compensation for damages may be sought.
 - Other sanctions listed in this Code may be applied
- 4) **Chewing gum** is forbidden.
- 5) **School supplied books** must be kept in good condition.
 - Students who fail to do so or who lose the books allocated to them will be required to pay the cost of replacing the book to the School.
- 6) **Student Lockers** are school property and must not be misused, deliberately damaged or defaced in any way.
 - Where lockers are vandalised/misused students will forfeit the privileged of renting a locker
 - Student are responsible for ensuring their locker is locked at all times.
 - Students must ensure their locker is left empty and clean at the end of the school year.
 - Students are responsible for the security of the locker pin code and must not share this with anyone else.

STUDENT PROPERTY & EQUIPMENT

1) Each student is responsible for his/her own property. All personal belongings must be clearly marked with owner's name. (e.g. uniform, jackets, books, etc)

2) Each student must have the following each day;-

- Student Journal
- Correct textbooks/equipment for each class
- Fully completed homework

3) Mobile Phones / Electronic Equipment

- Mobile phones must be **switched off** and **placed in school bags** as soon as students arrive in school every morning.
- **Phones MUST remain in bags until the end of the school day.**
- **Students MUST NOT use their phone and/or have their phone on their person during the school day.**
- **Students in breach of this rule will have their phone confiscated until the end of the school day.**

Students who are repeatedly in breach of the above mobile phone rule may be placed in detention and/or suspension may be implemented.

4) Cameras, Camera-Phones & Media Devices

- Using a phone/camera/media device to take pictures/recordings during school time or on school activities without specific permission from a teacher, is an infringement of privacy and is therefore not permitted.
- Students must not use/publish/upload images, comments and/or photos of other students or staff without specific consent from the individual(s) concerned.
- In the interest of personal privacy students who engage in the above activities may incur suspension.

**Parents/guardians who need to contact students while they are in school
MUST do so via the School Office (061416628)**

**Students who need to contact parents while they are in school
MUST also do so via the School Office.**

5) Other Electronic Equipment

MP3 players, cameras, camcorders and other audio/video/gaming equipment are not to be used during school hours or on school property.

- Such equipment will be confiscated until the end of the school day.

6) Valuables

Students are advised **not to bring valuable items** to schools. (*Including valuable jewellery, equipment, clothes and footwear*)

The school cannot accept responsibility for items lost on the premises.

HEALTH, SAFETY & WELLBEING OF STUDENTS

- 1) In order to help ensure that all students can feel comfortable and safe in the school environment **students must keep company with other students from their own year group only**. This is to help avoid perceptions of and/or actual intimidation and social difficulties between year groups and individuals.
- 2) Students must walk their **bicycles** on school grounds at all times.
- 3) Interference with **fire alarms/extinguishers** is illegal and will be treated as a serious offence carrying a minimum fine of €20 and/or further sanctions.
- 4) **Cigarette smoking/vaping**, or smoking, possession, consumption, inhalation or otherwise taking of drugs or alcohol or any harmful/mood altering substances **while in school uniform or on school activities, is strictly forbidden**. Any attempt to encourage or involve others in such activities is also prohibited.

Students caught smoking/vaping will incur the following sanctions;

- Parents will be informed.
- 5 school days of after-school detention for a first time offence.
- Subsequent offences will merit suspension.

Students who are in the company of those who are smoking/vaping will be given a verbal warning. Subsequent incidents of smoking/vaping or being with a student who is smoking will then result in loss of break/lunch privileges and parents will be contacted.

Incidents involving possession, use of, or intoxication from alcohol, drugs or illegal/harmful substances will necessitate the following;-

- Student(s) will be removed from class immediately.
- Parents/guardians will be sent for.
- Such incidents will result in suspension pending a full investigation, after which further sanctions may be applied. This may include a further period of suspension or exclusion. *Each individual case will be assessed and the approach level of sanctions will be used according to the seriousness of the incident and the extent of the student's involvement.*
- An Garda Síochána will be informed of all drugs or substance abuse related incidents.
- Where appropriate relevant support agencies will also be contacted and students may also be required to speak with the school counsellor.

The above rules on smoking and use of alcohol/harmful substances applies to all students taking part in school activities regardless of time, venue or a student's age.

Anti-Social Behaviour / Bullying / Intimidation

Bullying or threatening behaviour towards any member of the school community will not be tolerated.

Behaviour, in person or through social media/technology, which poses a risk to other members of the school community or prevents others from experiencing school in a safe and comfortable environment is unacceptable.

Bullying behaviour and/or intimidation will be dealt with in accordance with the school's Anti-Bullying Policy/Charter.

All students must sign-up to and adhere to the school's Anti-Bullying Policy/Charter.

The following serious offences may necessitate parents being sent for and may result in suspension of those involved and/or other sanctions outlined in this code.

- a) Bullying/Intimidation, in person or through social media/technology
- b) Fighting
- c) Disrespecting members of staff.

Repeat offences may incur the more serious sanction of referral to the Board of Management for exclusion.

Classroom Procedures

Students are expected to act in a calm, safe and respectful manner when in a classroom. All students should;

- Line-up outside a room in single file along the wall outside the classroom. Students may not enter the classroom until their teacher is present.
- Go immediately to their allocated seat and take out their books for that class.
- Place their Student Journal on the desk at the start of each class.
- Have all books & equipment required for each class. (*Students may only go to their lockers at the following times;- before school, break, lunch and after school.*).
- Place all chairs neatly under the table at the end of each class, so as to avoid accidents and congestion.
- Ensure the space in which they were working is clean and tidy before leaving the room.
- Students are not to open windows or adjust blinds without the teacher's permission.

SUSPENSION / EXCLUSION

There may be cases of unacceptable behaviour where it will be in the best interests of the school community/ or the student involved, for the student to be removed from the school for a period of time or completely. Suspension and exclusion are the options available to the Principal and/or the Board of Management in these situations.

The Principal has the authority, under the Articles of Management for Secondary Schools, to suspend “*any pupil for a limited period and shall report any such suspension to the Board of Management at its next meeting*”. [Article 19(b)]

If, in the judgement of the Principal, a student should be permanently excluded, the “*Principal shall refer the matter to the Board of Management for the decision*”. [Article 19(c)]

The Board of Management and the Principal will exercise this authority having regard to their responsibilities to the whole school community and to the principles for procedural fairness.

Depending on the nature and extent of the misbehaviour the support of other agencies, such as the National Education Welfare Board or the National Educational Psychological Service, may be sought by the Board of Management.

SUSPENSION

Suspension allows students time to reflect on the behaviour which led to suspension, to acknowledge and accept responsibility for their behaviour and to accept responsibility for changing their behaviour to meet the school’s expectation in the future.

Suspension may occur as a result of

a) A single/small number of incidents of a serious nature b) On-going unacceptable behaviour

a) Parents will be asked to meet with the Principal to discuss the incident(s). The suspension can then be formalised in line with the procedures outlined in this policy.

b) Suspension for on-going unacceptable behaviour will usually only occur after the school has:

- ❖ Ensured all other relevant discipline procedures under the Code of Behaviour have been applied and documented.
- ❖ Ensured relevant support personnel (internal and/or external) have been involved where appropriate.
- ❖ Ensured that discussion has occurred with the student and parent/guardian regarding specific behaviours which the school considers unacceptable and which may lead to suspension.
- ❖ Recorded previous sanctions/actions taken.

Suspension Procedures

- ❖ The Principal (or in the absence of the Principal, the acting or Deputy Principal) makes the decision to suspend based on the rules and procedures set out in the Code of Behaviour.
- ❖ The student is informed of the reason for the suspension and is given an opportunity to respond.
- ❖ Except in extremely serious circumstances, the student will be supervised or remain in class until the suspension takes effect. Students will generally not be sent home during the school day unless they are collected by a parent/guardian.

The parents/guardians will be contacted by the school at which point they will be informed of the reason(s) for the suspension and will be given an opportunity to respond, before the suspension is formalised. The parents/guardians will also be informed of the suspension in writing.

- ❖ In some circumstances the Principal may need to suspend immediately. Such incidents may include, but are not confined to, aggressive or intimidating behaviour, violence or the threat of violence,

presence of weapons, illegal drugs, serious disrespect to a member of staff, potentially putting students/staff/themselves at risk or threatening to do so etc.

If the suspension is to be immediate (eg in the interests of health & safety) parents/guardians will be informed by phone where possible, followed by written confirmation.

- ❖ The formal letter of suspension will include:
 - Notice of the suspension as well as the effective date and duration of the suspension;
 - Reason(s) for the suspension
 - Expectations for the students while on suspension (for example; consideration of their behaviour & the consequences, study etc) as well as requirements which need to be in place when they return to school, where deemed necessary (for example; commitment to improved behaviour/attitude, written apology, completed assignments etc)
 - Importance of parental assistance in resolving the matter and a statement that the student is under the care and responsibility of their parents/guardians while on suspension;
 - In cases where suspension is longer than 6 days or the student has been suspended for 20 days or more in the school year, a statement that the Education Welfare Board has been informed
 - In cases where the suspension is for a period of 7 school days or more* a statement informing parents/guardians of their right to appeal in writing to the Board of Management.
 - In cases where consideration is being given to exclusion, this should also be included.

Removing a Suspension

Grounds for removing a suspension may include:

- ❖ The Principal and/or the Board of Management may agree that another sanction be applied after discussion with parents/guardians
- ❖ New circumstances come to light.
- ❖ Other grounds/information affecting the case.

Length of Suspension

The Principal will decide the length of time a student will be suspended for. If a student is suspended for a period of 6 days or more, the Principal must inform the local Educational Welfare Officer.

If a student is suspended for a cumulative total of 20 days or more in one school year, the Principal must inform the Education Welfare Officer.

Appeals Procedure

The nature of school life and timescale required to convene a Board of Management meeting mean that formal appeals to the Board of Management on short suspensions issued by the Principal are often impractical. In such cases the suspension will be implemented, but parents have the right to appeal short suspensions (*less than 7 days*) in writing, in order that the suspension record be removed from the students file, if the appeal is upheld.

A formal written appeal may be made in the case of long suspensions (7 + days)*. Appeals must be made in writing to the Board of Management through the Secretary to the Board of Management.

The appeal will be considered by either the entire Board or a Sub-committee of the same. The school may insist that the student remain at home while any appeal on a suspension is in process.

Exclusions

Exclusions will only occur after the school has:-

- ❖ ...ensured all other relevant discipline procedures under the Code of Behaviour have been applied and documented;
- ❖ ...ensured support personnel (internal and/or external) have been involved where appropriate;
- ❖ ...ensured that discussion has occurred with the student and parent/guardian regarding specific misbehaviour which the school considers unacceptable and which may lead to exclusion;
- ❖ ...provided verbal and written warnings at appropriate times detailing the student's behaviour and the schools expectations of the student;
- ❖ ...recorded previous sanctions/actions taken and copies of all correspondence retained.
- ❖ ...informed parents/guardians of the Principals intention to recommend exclusion to the Board of Management.
- ❖ ...provided the parents/guardians with a full copy of the Principal's submission regarding the student's behaviour and the case being made to the Board of Management.
- ❖ ...invited the parents/guardians to a Board of Management meeting and invited them to make a response (written or oral).

.....and the Board of Management has:-

- ❖ ...received a written submission from the Principal recommending exclusion.
- ❖ ...received a response (written or oral) from the parents
- ❖ ...examined all the relevant documentation and considered the student's record in the school
- ❖ ...taken legal/expert advice where appropriate.
- ❖ ...discussed the case in detail
- ❖ ...considered all relevant matters, including the impact of behaviour on the school community as a whole.
- ❖ ...made a final decision to exclude the student
- ❖ ...communicated the decision to the parents formally through the Secretary of the Board of Management by registered post.
- ❖ ...informed the Education Welfare Officer under Section 24(1) of the Education Welfare Act(2000)

- ❖ ...the formal letter of notification will include the following:
 - Notice and the effective date of the exclusion.
 - Reasons for the exclusion.
 - A statement that the Education Welfare Board has been informed of the exclusion.
 - A statement that the student is under the care and responsibility of their parent/guardian for the period of 20 days required by the Education Welfare Officer to examine alternative provisions for the education of the student.
 - A statement informing parents/guardians of their right to appeal (*Section 29 - Education Act 1998*)

The school may insist that the student remains at home while the exclusion process and/or any related appeal are concluded.

Acceptable use policy

For Access to Computer and Internet Facilities



The aim of this Acceptable Use Policy (AUP) is to ensure that pupils will benefit from learning opportunities offered by the school's IT resources in a safe and effective manner.

Internet use and access is considered a school resource and privilege. Therefore, if the school AUP is not adhered to this privilege will be withdrawn and appropriate sanctions will be imposed. The school will employ a number of strategies in order to maximise learning opportunities and reduce risks associated with the Internet. These strategies are as follows:

General

- All pupils require permission from a teacher to use the Internet.
 - Internet sessions will always be supervised by a teacher.
 - Filtering software and/or equivalent systems will be used in order to minimise the risk of exposure to inappropriate material.
 - The supervising teacher will monitor pupils' internet usage.
 - Students will be made aware of internet safety issues by their teachers.
 - Uploading and downloading of non-approved software will not be permitted.
 - Virus protection software will be used and updated on a regular basis.
 - The use USB memory drives with school equipment requires a teacher's permission.
 - Students must not use, publish or upload images/photos/comments of/about other students or staff without specific consent from the individual(s) concerned.
 - Students are not permitted to have smart devices in school, other than their phone which must be kept in their school bag at all times as per the Code of Behaviour.
- NB. Students are advised against bringing any valuable items to school (including phones) and the school does not accept responsibility for any damage, loss or theft of valuable items.

World Wide Web

- Students will not visit Internet sites that contain obscene, illegal, hateful or otherwise objectionable and inappropriate materials.
- Students will use the Internet for educational purposes only.
- Students will be familiar with copyright issues relating to online learning.
- Students will never disclose or publicise their own personal information or images online.
- Students will not disclose or publicise the personal information or images of others.
- Students will not comment, post images or respond to posts which could be regarded as disrespectful to other students, staff or other members of the school/local community.

Internet Content Filtering is now centrally controlled by NCTE (National Centre for Technology in Education). The content filtering option currently adopted by the school allows students to access a wide range of websites including educational, cultural and general interest categories while blocking potentially liable, objectionable or controversial content.

Email

- Students will use approved class email accounts under supervision by and permission from a teacher.
- Students will not send or receive any material that is illegal, obscene, defamatory or that is intended to upset, annoy or intimidate another person.
- Students will not reveal their own or other people's personal details, such as addresses or telephone numbers or pictures.
- Students will never arrange a face-to-face meeting with someone they only know through emails or the internet.
- Students will note that sending and receiving email attachments is subject to permission from their teacher.

Internet Chat / Social Media

- Students do not have permission to access chat rooms and/or social media sites while on school premises.
- Students are informed of the risks associated with social media and chat apps along with the potential for cyber bullying via these modes of communication.

Use of Information and Communication Technology (ICT) Equipment

- Students must respect all computer/IT equipment available in the school.
- The computer room and all other locations where computer equipment is made available must be kept clean and tidy at all times. Seating and desks in these areas must be used and maintained properly by all students with access to them.
- Any use of a piece of hardware for a purpose other than that for which it was provided by the school, will be considered misuse/abuse of that item.
- Removal of any piece of hardware from its designated location except under the express instruction of a staff member will be considered theft.
- Students must respect all software available in the school and ensure they do nothing to make that software unavailable to or harmful to other users.
- Students will not introduce software from outside the school environment via any medium except with the express permission of a staff member. It will be the responsibility of said staff member to ensure any such software is virus free.

Sanctions

- Failure to observe any of the above clauses or deliberate breaches of the school's policy in relation to internet Use and use of ICT equipment will lead to a user being refused permission to avail of the school's ICT equipment and facilities indefinitely. Where such use may be deemed a necessary part of a course being undertaken by that user an arrangement will be made between school management and parents/guardians.
- Furthermore, this policy will form part of the School's Code of Behaviour. Failure to comply with it will be treated as a disciplinary issue and depending on the nature of the offence, may incur any of the sanctions set out in the Code of Behaviour.
- The purpose of this Acceptable Use Policy is to ensure a safe, secure and efficient learning environment for all our students.



Anti-Bullying Charter

Coláiste Mhichíl, Sexton Street, Limerick

Bullying is the act of being unkind, overbearing and/or domineering of one or more person(s) to another.

Bullying happens when one or more people keep picking on another person over a period of time. It can involve

- ❖ Physically harming a person/beating someone up
- ❖ Constantly verbally abusing a person/name-calling/slugging/jeering a person
- ❖ Deliberately ignoring/excluding a person/making them feel left out
- ❖ Participating in online activities which isolate, intimate and/or humiliate others and prevent them from feeling safe and happy at school.

Bullying is a serious issue which can prevent students from progressing and being happy at school. It can also interfere with their social development and life outside of school.

It is the policy of Coláiste Mhichíl to ensure, as far as is possible, that no student or member of the school community shall be the victim of bullying. Full details of the school's procedures on dealing with bullying are outlined in the school's Anti-bully Policy.

Teachers in our school have always shown a positive and caring attitude to students in their care and will continue to do so. Great care will be taken when dealing with the victim of bullying and also when dealing with the bully. However, sanctions will apply where necessary.

It is hoped/encouraged that students who encounter bullying in school, either as a victim or as an observer, will seek help by communicating such information to a trusted friend, a teacher, Year Head, the Deputy Principal or the Principal, in an confidential manner. This communication is for the betterment of all parties concerned and to help to maintain the important sense of community that gives this school its strength and character.

Rights	Responsibilities
<p>I have a right to be:</p> <ol style="list-style-type: none"> 1) Safe in school 2) Physically safe 3) Expect my property to be safe in school 4) Free from all forms of verbal bullying 5) Free from extortion 6) Free from emotional bullying 7) Free from any hurtful remarks regarding person, race, ethnicity, religion, sexuality and culture 	<p>I have the responsibility to ensure that:</p> <ol style="list-style-type: none"> 1) Our school is a safe & secure place for others. 2) Others are physically safe 3) The property of others is safe 4) Others are free from verbal bullying 5) Others are free from extortion 6) Others are free from emotional bullying 7) Others are free from any hurtful remarks regarding person, race, ethnicity, religion, sexuality and culture

Bullying. Stop it, Report it, Don't Support it.

I, as a student in Coláiste Mhichíl, Limerick, am aware of what bullying is and how detrimental bullying is to an individual and the entire school community.

I will not partake in bullying behaviour of any sort nor will I stand idly by if I am aware of bullying occurring.

Signed :-

Date:-

Year Group :-

